

# SHRINK FIT CHUCKS



**NEW**  
Product Expansion  
CAT | BT | HSK | CAPTO



### Features

- 360° Clamping, Multiple planes
- Precision bore, no wear components
- No mechanical moving parts
- Induction shrink technology
- Tapered Design, AT3 Taper
- No screws, nuts or threads

### Benefits

- Highest gripping torque
- < 0.00012" (3 µm) runout
- Repeatable clamping
- Tool changes **less** than 5 seconds on average
- Carbide and HSS shrinkable
- Rigid interface
- Repeatable balance (G2.5@ 25,000 RPM)

## Why Shrink Fit?

Standard  
Shrink Fit  
Chuck



Power  
Shrink Fit  
Chuck



### TOTAL SOLUTION

#### Standard Shrink Fit Chucks

- Broad application range
- High accuracy < 0.00012" (3 µm) T.I.R.
- Long reach
- Options: Safe-Lock™ and Cool Flash

#### Power Shrink Fit Chucks

- Robust construction for heavy roughing
- Higher Metal Removal Rates (MRR)
- Vibration Dampening
- Accuracy < 0.00012" (3 µm) T.I.R.
- Options: Safe-Lock™ and Cool Flash

**Features**

- Groove on the tool shank is directed so that the tool will be pulled into the chuck
- Fit and mechanical form interlock
- Symmetrical design
- Concentric grind: no set screw or moving parts
- For High Performance Cutting (HPC)

**Benefits**

- No tool pull out or micro creeping = No damages to work piece or machine (img. 1)
- Increased metal removal rates
- Highest balance and highly accurate clamping due to shrink fit technology, runout accuracy < 0.00012" (3 µm) runout (img. 2)
- Total tool security without sacrificing T.I.R. or balance

*Why Safe-Lock™?*

Even with the highest degree of gripping torque, tool pull out is still possible in extreme high performance cutting conditions.

The combination of pulling and twisting forces (picture manually removing a cork from a wine bottle) leads to micro-creeping and ultimately tool breakage or pull-out.

**Safe-Lock™ Eliminates Micro-Creeping**

Drive keys in the chuck (or collet) interlock with grooves in the tool shank to eliminate any possibility of tool rotation.



Balance issues associated with weldon shank systems eliminated

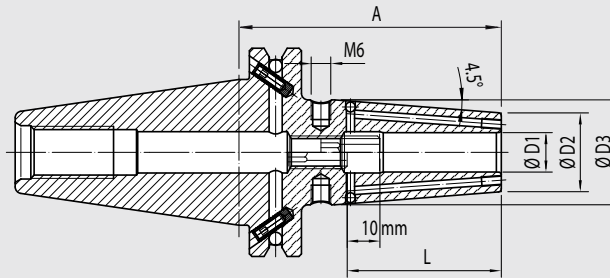


Image 1: No pull out of the tool with Safe-Lock™



Image 2: Best runout accuracy < 0.00012" (3 µm)  
Poor accuracy associated with weldon shank systems **eliminated**

**No longer need to sacrifice productivity for security**



**CERTIFICATE OF QUALITY**

<input checked="" type="checkbox"/> Chuck body fine balanced G2.5 25,000 rpm or U<1 gmm
<input checked="" type="checkbox"/> All functional surfaces machined
<input checked="" type="checkbox"/> Taper tolerance AT3
<input checked="" type="checkbox"/> Coolant supply form ADB
<input checked="" type="checkbox"/> T.I.R. < 0.00012" (3 µm)

**Use:**

Shrink fit chuck suitable for all shrink fit machines.

**CAT 40 FORM ADB**

Form ADB means: central-coolant supply and coolant channels through the flange which can be resealed

- Heat resistant hot-working steel
- Hardened 54-2 HRC
- For HSS and solid carbide tools
- Shank tolerance h6
- With threaded holes for balancing screws
- Resealable Cool-Jet coolant bores included

**Optional:**

- Cooling with Cool Flash from diam. ¼" – 1" for an extra charge
- Safe-Lock™ Pull out protection

**Standard version, similar to DIN 69882-8**

INCH	Clamping Ø D1 [inch]		1/8"	3/16"	1/4"	5/16"	3/8"	7/16"	1/2"	5/8"	3/4"	7/8"	1"	1 1/4"
	Ø D2 [inch]		0.39	0.39	0.83	0.83	0.94	0.94	1.06	1.06	1.30	1.30	1.73	1.73
	Ø D3 [inch]				1.06	1.06	1.26	1.26	1.34	1.65	1.65	2.09	2.09	2.09
	L [inch]		0.35	0.47	1.42	1.42	1.65	1.65	1.85	1.97	2.05	2.05	2.28	2.28
Gage length A [inch]	short		3.15 <sup>1)</sup>	3.15 <sup>1)</sup>	3.15	3.15	3.15	3.15	3.15	3.15	3.15	3.15	3.94	3.94
<b>Standard Order No.</b>	<b>40.840...</b>		<b>.1/8Z</b>	<b>.3/16Z</b>	<b>.1/4Z.4</b>	<b>.5/16Z.4</b>	<b>.3/8Z.4</b>	<b>.7/16Z.4</b>	<b>.1/2Z.4</b>	<b>.5/8Z.4</b>	<b>.3/4Z.4</b>	<b>.7/8Z.4</b>	<b>.1Z.4</b>	<b>.1 1/4Z.4</b>
Gage length A [inch]	ZG130		-	-	5.12	5.12	5.12	5.12	5.12	5.12	5.12	5.12	5.12	5.12
<b>Order No.</b>	<b>40.844...</b>				<b>.1/4Z.4</b>	<b>.5/16Z.4</b>	<b>.3/8Z.4</b>	<b>.7/16Z.4</b>	<b>.1/2Z.4</b>	<b>.5/8Z.4</b>	<b>.3/4Z.4</b>	<b>.7/8Z.4</b>	<b>.1Z.4</b>	<b>.1 1/4Z.4</b>
Gage length A [inch]	oversize		-	-	6.30	6.30	6.30	6.30	6.30	6.30	6.30	6.30	6.30	6.30
<b>Order No.</b>	<b>40.842...</b>				<b>.1/4Z.4</b>	<b>.5/16Z.4</b>	<b>.3/8Z.4</b>	<b>.7/16Z.4</b>	<b>.1/2Z.4</b>	<b>.5/8Z.4</b>	<b>.3/4Z.4</b>	<b>.7/8Z.4</b>	<b>.1Z.4</b>	<b>.1 1/4Z.4</b>

METRIC	Clamping Ø D1 [mm]		03	04	05	06	08	10	12	14	16	20	25	32
	Ø D2 [mm]		10	10	10	21	21	24	24	27	27	33	44	44
	Ø D3 [mm]					27	27	32	32	34	34	42	53	53
	L [mm]		09	12	15	36	36	42	47	47	50	52	58	58
Gage length A [mm]	short		80 <sup>1)</sup>	80 <sup>1)</sup>	80 <sup>1)</sup>	80	80	80	80	80	80	80	100	100
<b>Order No.</b>	<b>40.840...</b>		<b>.03</b>	<b>.04</b>	<b>.05</b>	<b>.06.4</b>	<b>.08.4</b>	<b>.10.4</b>	<b>.12.4</b>	<b>.14.4</b>	<b>.16.4</b>	<b>.20.4</b>	<b>.25.4</b>	<b>.32.4</b>
Gage length A [mm]	ZG130		-	-	-	130	130	130	130	130	130	130	130	130
<b>Order No.</b>	<b>40.844...</b>					<b>.06.4</b>	<b>.08.4</b>	<b>.10.4</b>	<b>.12.4</b>	<b>.14.4</b>	<b>.16.4</b>	<b>.20.4</b>	<b>.25.4</b>	<b>.32.4</b>
Gage length A [mm]	oversize		-	-	-	160	160	160	160	160	160	160	160	-
<b>Order No.</b>	<b>40.842...</b>					<b>.06.4</b>	<b>.08.4</b>	<b>.10.4</b>	<b>.12.4</b>	<b>.14.4</b>	<b>.16.4</b>	<b>.20.4</b>	<b>.25.4</b>	

**Standard version with Safe-Lock™ and M3 seal screw installed**

INCH	Clamping Ø D1 [inch]		1/4"	5/16"	3/8"	1/2"	5/8"	3/4"	1"	1 1/4"
	Ø D2 [inch]		0.83	0.83	0.94	0.94	1.06	1.30	1.73	1.73
	Ø D3 [inch]		1.06	1.06	1.26	1.26	1.34	1.65	2.09	2.09
	L [inch]		1.42	1.42	1.65	1.85	1.97	2.05	2.28	2.28
Gage length A [inch]	short		3.15	3.15	3.15	3.15	3.15	3.15	3.94	3.94
<b>Order No.</b>	<b>40.840...</b>		<b>.1/4Z.47</b>	<b>.5/16Z.47</b>	<b>.3/8Z.47</b>	<b>.1/2Z.47</b>	<b>.5/8Z.47</b>	<b>.3/4Z.47</b>	<b>.1Z.47</b>	<b>.1 1/4Z.47</b>

METRIC	Clamping Ø D1 [mm]		06	08	10	12	14	16	20	25	32
	Ø D2 [mm]		21	21	24	24	27	27	33	44	44
	Ø D3 [mm]		27	27	32	32	34	34	42	53	53
	L [mm]		36	36	42	47	47	50	52	58	58
Gage length A [mm]	short		80	80	80	80	80	80	80	100	100
<b>Order No.</b>	<b>40.840...</b>		<b>.06.47</b>	<b>.08.47</b>	<b>.10.47</b>	<b>.12.47</b>	<b>.14.47</b>	<b>.16.47</b>	<b>.20.47</b>	<b>.25.47</b>	<b>.32.47</b>

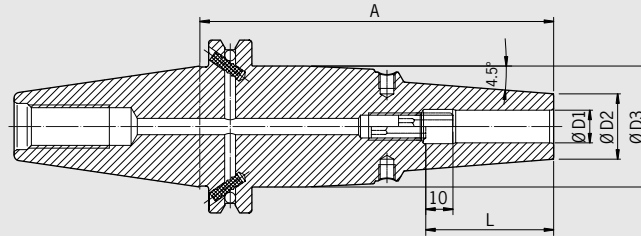
1) Without back-up screw, without threads for balancing screws, with slits along the clamping bore for coolant around the tool



# POWER SHRINK CHUCK CAT 40 · ASME B5.50

### CERTIFICATE OF QUALITY

<input checked="" type="checkbox"/> Chuck body fine balanced G2.5 25,000 rpm or U<1 gmm
<input checked="" type="checkbox"/> All functional surfaces machined
<input checked="" type="checkbox"/> Taper tolerance AT3
<input checked="" type="checkbox"/> Coolant supply form ADB
<input checked="" type="checkbox"/> Cool-Jet, can be sealed
<input checked="" type="checkbox"/> T.I.R. < 0.00012" (3 µm)



**The Power Shrink Chuck is designed for the highest cutting performance in high-speed manufacturing. The optimized design combines high rigidity with vibration dampening, which protects the machine, spindle and tool.**

- Higher cutting performance with higher spindle speeds, higher feeds and larger cutting depths
- Shorter processing times, higher machining accuracy
- Quieter running, therefore better surface finish quality and protection of tool, spindle and machine
- With threaded holes for balancing screws
- Resealable Cool-Jet coolant bores included

**The long versions with slim tips are especially versatile to use.**

- High rigidity, slim at the tip, dampen vibrations
- Higher clamping forces
- Equally suited to high-speed manufacturing and heavy milling
- Universal usage, saves space in tool magazine

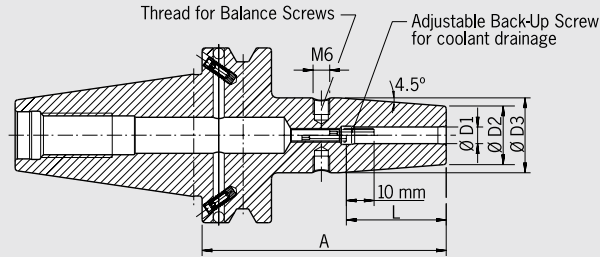
Optional:

- Cooling with Cool Flash for an extra charge
- Safe-Lock™ Pull out protection

INCH	Ø D1 [inch]	1/4"	5/16"	3/8"	1/2"	5/8"	3/4"	1"
	Ø D2 [inch] ultra short	0.87	0.87	1.04	1.04	1.16	1.40	1.79
	Ø D3 [inch] ultrashort	1.75	1.75	1.75	1.75	1.75	1.75	1.75
	L [inch] ultra short	1.42	1.42	1.65	1.85	1.97	2.05	2.28
Gage length A [inch]	ultra short	2.56	2.56	2.56	2.56	2.56	2.56	2.95
Standard Order No.	40.845...	.1/4z.3	.5/16z.3	.3/8z.3	.1/2z.3	.5/8z.3	.3/4z.3	.1z.3
Safe-Lock™ Order No.	40.845...	.1/4z.37	.5/16z.37	.3/8z.37	.1/2z.37	.5/8z.37	.3/4z.37	.1z.37
	Ø D2 [inch] ZG130/oversize	0.83	0.83	0.94	0.94	1.06	1.30	—
	Ø D3 [inch] ZG130/oversize	1.75	1.75	1.75	1.75	1.75	1.75	—
	L [inch] ZG130/oversize	1.42	1.42	1.65	1.85	1.97	2.05	—
Gage length A [inch]	ZG130	5.12	5.12	5.12	5.12	5.12	5.12	—
Standard Order No.	40.844...	.1/4z.3	.5/16z.3	.3/8z.3	.1/2z.3	.5/8z.3	.3/4z.3	—
Safe-Lock™ Order No.	40.844...	.1/4z.37	.5/16z.37	.3/8z.37	.1/2z.37	.5/8z.37	.3/4z.37	—
Gage length A [inch]	oversize	6.30	6.30	6.30	6.30	6.30	6.30	—
Standard Order No.	40.842...	.1/4z.3	.5/16z.3	.3/8z.3	.1/2z.3	.5/8z.3	.3/4z.3	—
Safe-Lock™ Order No.	40.842...	.1/4z.37	.5/16z.37	.3/8z.37	.1/2z.37	.5/8z.37	.3/4z.37	—

METRIC	Ø D1 [mm]	6	8	10	12	16	20	25
	Ø D2 [mm] ultra short	22	22	26.5	26.5	29.5	35.5	45.5
	L [mm] ultra short	36	36	42	47	50	52	58
Gage length A [mm]	ultra short	65	65	65	65	65	65	75
Standard Order No.	40.845...	.06.3	.08.3	.10.3	.12.3	.16.3	.20.3	.25.3
Safe-Lock™ Order No.	40.845...	.06.37	.08.37	.10.37	.12.37	.16.37	.20.37	.25.37
	Ø D2 [mm] ZG130/oversize	21	21	24	24	27	33	—
	Ø D3 [mm] ZG130/oversize	44.45	44.45	44.45	44.45	44.45	44.45	—
	L [mm] ZG130/oversize	36	36	42	47	50	52	—
Gage length A [mm]	ZG130	130	130	130	130	130	130	—
Standard Order No.	40.844...	.06.3	.08.3	.10.3	.12.3	.16.3	.20.3	—
Safe-Lock™ Order No.	40.844...	.06.37	.08.37	.10.37	.12.37	.16.37	.20.37	—
Gage length A [mm]	oversize	160	160	160	160	160	160	—
Order No.	40.842...	.06.3	.08.3	.10.3	.12.3	.16.3	.20.3	—
Safe-Lock™ Order No.	40.842...	.06.37	.08.37	.10.37	.12.37	.16.37	.20.37	—

**SHRINK FIT CHUCK  
BT40 · JIS B 6339  
INCH**



CERTIFICATE OF QUALITY	
<input checked="" type="checkbox"/>	Chuck body fine balanced G2.5 25,000 rpm or U<1 gmm
<input checked="" type="checkbox"/>	All functional surfaces machined
<input checked="" type="checkbox"/>	Taper tolerance AT3
<input checked="" type="checkbox"/>	Coolant supply form ADB
<input checked="" type="checkbox"/>	Cool-Jet, can be sealed
<input checked="" type="checkbox"/>	T.I.R. < 0.00012" (3 µm)

**Use:**

Shrink fit chuck suitable for all shrink fit machines.

**JIS B 6339 BT 40 FORM ADB**

Form ADB means: central coolant supply and coolant channels through the flange which can be resealed

- Heat resistant hot-working steel
- Hardened 54-2 HRC

- For HSS and solid carbide tools
- Shank tolerance h6
- Included in delivery: Shrink fit chuck with back-up screw
- With threaded holes for balancing screws
- Cool-Jet bores that can be sealed included

**Optional:**

- Cooling with Cool Flash from diam. ¼" – 1" for an extra charge

**Standard version**

INCH	Clamping Ø D1 [inch]	1/8"	3/16"	1/4"	5/16"	3/8"	7/16"	1/2"	5/8"	3/4"	7/8"	1"	1 1/4"
	Ø D2 [inch]	0.39	0.39	0.83	0.83	0.94	0.94	0.94	1.06	1.30	1.30	1.73	1.73
	Ø D3 [inch]	-	-	1.06	1.06	1.26	1.26	1.26	1.34	1.65	1.65	2.09	2.09
	L [inch]	0.35	0.47	1.42	1.42	1.65	1.65	1.85	1.97	2.05	2.05	2.28	2.28
	Gage length A [inch] short	3.54 <sup>1)</sup>	3.54 <sup>1)</sup>	3.54	3.54	3.54	3.54	3.54	3.54	3.54	3.54	3.94	3.94
	<b>Order No. 40.640...</b>	<b>.1/8Z</b>	<b>.3/16Z</b>	<b>.1/4Z.4</b>	<b>.5/16Z.4</b>	<b>.3/8Z.4</b>	<b>.7/16Z.4</b>	<b>.1/2Z.4</b>	<b>.5/8Z.4</b>	<b>.3/4Z.4</b>	<b>.7/8Z.4</b>	<b>.1Z.4</b>	<b>.1 1/4Z.4</b>
	Gage length A [inch] ZG130	-	-	5.12	5.12	5.12	5.12	5.12	5.12	5.12	5.12	5.12	5.12
	<b>Order No. 40.644...</b>			<b>.1/4Z.4</b>	<b>.5/16Z.4</b>	<b>.3/8Z.4</b>	<b>.7/16Z.4</b>	<b>.1/2Z.4</b>	<b>.5/8Z.4</b>	<b>.3/4Z.4</b>	<b>.7/8Z.4</b>	<b>.1Z.4</b>	<b>.1 1/4Z.4</b>
	Gage length A [inch] oversize	-	-	6.30	6.30	6.30	6.30	6.30	6.30	6.30	6.30	6.30	6.30
	<b>Order No. 40.642...</b>			<b>.1/4Z.4</b>	<b>.5/16Z.4</b>	<b>.3/8Z.4</b>	<b>.7/16Z.4</b>	<b>.1/2Z.4</b>	<b>.5/8Z.4</b>	<b>.3/4Z.4</b>	<b>.7/8Z.4</b>	<b>.1Z.4</b>	<b>.1 1/4Z.4</b>

**Standard version with Safe-Lock™ and M3 seal screw installed**

INCH	Clamping Ø D1 [inch]	1/4"	5/16"	3/8"	1/2"	5/8"	3/4"	1"	1 1/4"
	Ø D2 [inch]	0.83	0.83	0.94	0.94	1.06	1.30	1.73	1.73
	Ø D3 [inch]	1.06	1.06	1.26	1.26	1.34	1.65	2.09	2.09
	L [inch]	1.42	1.42	1.65	1.85	1.97	2.05	2.28	2.28
	Gage length A [inch] short	3.54	3.54	3.54	3.54	3.54	3.54	3.94	3.94
	<b>Order No. 40.640...</b>	<b>.1/4Z.47</b>	<b>.5/16Z.47</b>	<b>.3/8Z.47</b>	<b>.1/2Z.47</b>	<b>.5/8Z.47</b>	<b>.3/4Z.47</b>	<b>.1Z.47</b>	<b>.1 1/4Z.47</b>



**Accessories**

**Spare parts Pull Studs**



**Spare parts Reduction Sleeves for small shanks**



**Spare parts Balance Screws**



**Spare parts Back-up screws**



**Shrink fit extensions**



**Cool Flash**



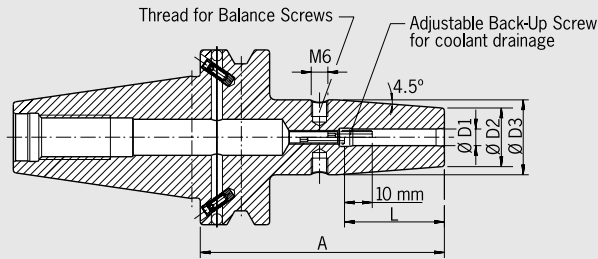
**Order No. 91.100.40**

1) Without back-up screw, without threads for balancing screws, with slits along the clamping bore for coolant around the tool

# SHRINK FIT CHUCK BT40 · JIS B 6339 METRIC

### CERTIFICATE OF QUALITY

- Chuck body fine balanced  
G2.5 25,000 rpm  
or U<1 gmm
- All functional surfaces machined
- Taper tolerance AT3
- Coolant supply form ADB
- T.I.R. < 0.00012" (3 µm)



### Use:

Shrink fit chuck suitable for all shrink fit machines.

### JIS B 6339 BT 40 FORM ADB

Form ADB means: central coolant supply and coolant channels through the flange which can be resealed

- Heat resistant hot-working steel
- Hardened 54-2 HRC

- For HSS and solid carbide tools
- Shank tolerance h6
- Included in delivery: Shrink fit chuck with back-up screw
- With threaded holes for balancing screws

### Optional:

- Cooling with Cool-Jet for an extra charge
- Cooling with Cool Flash for an extra charge

### Standard version, similar to DIN 69882-8

METRIC	Clamping Ø D1 [mm]		03	04	05	06	08	10	12	14	16	18	20	25	32
	Ø D2 [mm]		10	10	10	21	21	24	24	27	27	33	33	44	44
	Ø D3 [mm]		—	—	—	27	27	32	32	34	34	42	42	53	53
	L [mm]		9	12	15	36	36	42	47	47	50	50	52	58	58
Gage length A [mm]	short		90 <sup>1)</sup>	90 <sup>1)</sup>	90 <sup>1)</sup>	90	90	90	90	90	90	90	90	100	100
Order No.	40.640...		.03.1	.04.1	.05.1	.06	.08	.10	.12	.14	.16	.18	.20	.25	.32
Gage length A [mm]	ZG130		—	—	—	130	130	130	130	130	130	130	130	130	—
Order No.	40.644...		—	—	—	.06	.08	.10	.12	.14	.16	.18	.20	.25	—
Gage length A [mm]	extralong		—	—	—	160	160	160	160	160	160	160	160	160	—
Order No.	40.642...		—	—	—	.06	.08	.10	.12	.14	.16	.18	.20	.25	—
Gage length A [mm]	ZG200		—	—	—	200	200	200	200	200	200	200	200	200	—
Order No.	40.646...		—	—	—	.06	.08	.10	.12	.14	.16	.18	.20	.25	—

### Standard version, with Cool-Jet (Ø 3–5 mm Cooling with slits)

METRIC	Clamping Ø D1 [mm]		03	04	05	06	08	10	12	14	16	20	25
	Ø D2 [mm]		10	10	10	21	21	24	24	27	27	33	44
	Ø D3 [mm]		—	—	—	27	27	32	32	34	34	42	53
	L [mm]		9	12	15	36	36	42	47	47	50	52	58
Gage length A [mm]	short		90 <sup>2)</sup>	90 <sup>2)</sup>	90 <sup>2)</sup>	90	90	90	90	90	90	90	100
Order No.	40.640...		.03	.04	.05	.06.2	.08.2	.10.2	.12.2	.14.2	.16.2	.20.2	.25.2

### Standard version, with Safe-Lock™ pull out protection

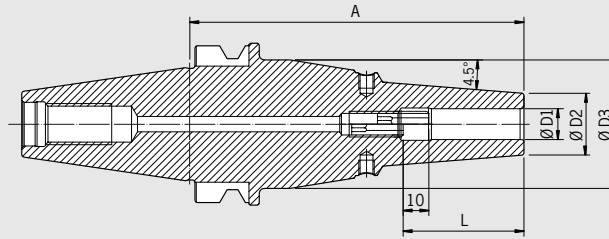
METRIC	Clamping Ø D1 [mm]		06	08	10	12	14	16	18	20	25	32
	Ø D2 [mm]		21	21	24	24	27	27	33	33	44	44
	Ø D3 [mm]		27	27	32	32	34	34	42	42	53	53
	L [mm]		36	36	42	47	47	50	50	52	58	58
Gage length A [mm]	short		90 <sup>3)</sup>	90 <sup>3)</sup>	90 <sup>3)</sup>	90 <sup>3)</sup>	90 <sup>3)</sup>	90 <sup>3)</sup>	90 <sup>3)</sup>	90 <sup>3)</sup>	100 <sup>3)</sup>	100 <sup>3)</sup>
Order No.	40.640...		.06.7	.08.7	.10.7	.12.7	.14.7	.16.7	.18.7	.20.7	.25.7	.32.7



1) Without back-up screw, without thread for balancing screws, without slits along the clamping bore for cooling from outside

2) Without back-up screw, without thread for balancing screws, with slits along the clamping bore for cooling from outside

3) With tension spring



CERTIFICATE OF QUALITY	
<input checked="" type="checkbox"/>	Chuck body fine balanced G2.5 25,000 rpm or U < 1 gmm
<input checked="" type="checkbox"/>	All functional surfaces machined
<input checked="" type="checkbox"/>	Taper tolerance AT3
<input checked="" type="checkbox"/>	Coolant supply form ADB
<input checked="" type="checkbox"/>	Cool-Jet, can be sealed
<input checked="" type="checkbox"/>	T.I.R. < 0.00012" (3 µm)

The Power Shrink Chuck is designed for the highest cutting performance in high-speed manufacturing. The optimized design combines high rigidity with vibration dampening, which protects the machine, spindle and tool.

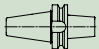
- Higher cutting performance with higher spindle speeds, higher feed rates and larger cutting depths
- Shorter processing times
- Quieter running, therefore better surface finish and protection of tool, spindle and machine
- Higher machining accuracy
- With threaded holes for balancing screws
- Resealable Cool-Jet coolant bores included

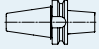
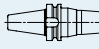
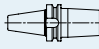
The long versions (A=130 and 160) with slim tips are especially versatile to use.

- High rigidity
- Slim at the tip
- Dampen vibrations
- Higher clamping forces
- Equally suited to high-speed manufacturing and heavy milling
- Universal usage, saves space in tool magazine

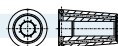
Optional:

- Cooling with Cool Flash from diam. ¼" – 1" for an extra charge
- Safe-Lock™ Pull out protection

INCH	Clamping Ø D1 [inch]		1/4"	5/16"	3/8"	1/2"	5/8"	3/4"	1"	1 1/4"
	Ø D2 [inch]		0.87	0.87	1.04	1.04	1.16	1.39	1.79	1.79
	L [inch]		1.42	1.42	1.65	1.85	1.97	2.05	2.28	2.28
Gage length A [inch]	ultra short		2.76	2.76	2.76	2.76	2.95	2.95	3.35	3.35
Order No.	40.645...		.1/4z.3	.5/16z.3	.3/8z.3	.1/2z.3	.5/8z.3	.3/4z.3	.1z.3	.11/4z.3
Safe-Lock™ Order No.	40.645...		.1/4z.37	.5/16z.37	.3/8z.37	.1/2z.37	.5/8z.37	.3/4z.37	.1z.37	.11/4z.37

METRIC	Clamping Ø D1 [mm]		06	08	10	12	14	16	18	20	25	32
	Ø D2 [mm] ultra short		22	22	26.5	26.5	29.5	29.5	35.5	35.5	45.5	45.5
	L [mm] ultra short		36	36	42	47	47	50	50	52	58	58
Gage length A [mm]	ultra short		70	70	70	70	75	75	75	75	85	85
Order No.	40.645...		.06.3	.08.3	.10.3	.12.3	.14.3	.16.3	.18.3	.20.3	.25.3	.32.3
Safe-Lock™ Order No.	40.645...		.06.37	.08.37	.10.37	.12.37	.14.37	.16.37	.18.37	.20.37	.25.37	.32.37
	Ø D2 [mm] ZG130/oversize		21	21	24	24	27	27	33	33	—	—
	Ø D3 [mm] ZG130/oversize		50	50	50	50	50	50	50	50	—	—
	L [mm]		36	36	42	47	47	50	50	52	—	—
Gage length A [mm]	ZG130		130	130	130	130	130	130	130	130	—	—
Order No.	40.644...		.06.3	.08.3	.10.3	.12.3	.14.3	.16.3	.18.3	.20.3	—	—
Safe-Lock™ Order No.	40.644...		.06.37	.08.37	.10.37	.12.37	.14.37	.16.37	.18.37	.20.37	—	—
Gage length A [mm]	oversize		160	160	160	160	160	160	160	160	—	—
Order No.	40.642...		.06.3	.08.3	.10.3	.12.3	.14.3	.16.3	.18.3	.20.3	—	—
Safe-Lock™ Order No.	40.642...		.06.37	.08.37	.10.37	.12.37	.14.37	.16.37	.18.37	.20.37	—	—

**Accessories**  
Cool Flash



Order No. 91.100.40

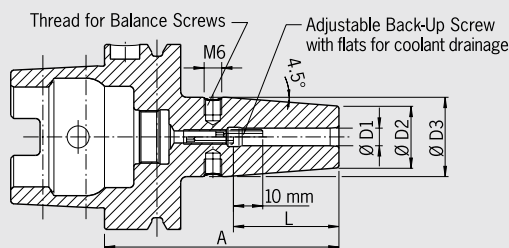
See Tool Holder catalog



# SHRINK FIT CHUCK HSK-A 63 · DIN 69893-1 INCH

### CERTIFICATE OF QUALITY

- ☑ Chuck body fine balanced  
G2.5 25,000 rpm  
or U < 1 gmm
- ☑ All functional surfaces machined
- ☑ More accurate than DIN
- ☑ Cool-Jet, can be sealed
- ☑ T.I.R. < 0.00012" (3 µm)



### Use:

Shrink fit chuck suitable for all shrink fit machines.

- Heat resistant hot-working steel
- Hardened 54-2 HRC
- For HSS and solid carbide tools
- Shank tolerance h6
- With threaded holes for balancing screws
- Resealable Cool-Jet coolant bores included

### DIN 69893-1

Optional:

- Cooling with Cool Flash from diam. 1/4" – 1" for an extra charge

### Standard version

INCH	Clamping Ø D1 [inch]		1/8"	3/16"	1/4"	5/16"	3/8"	7/16"	1/2"	5/8"	3/4"	1"	1 1/4"
	Ø D2 [inch]		0.39	0.39	0.83	0.83	0.94	0.94	0.94	1.06	1.30	1.73	1.73
	Ø D3 [inch]		-	-	1.06	1.06	1.26	1.26	1.26	1.34	1.65	2.09	2.09
	L [inch]		0.35	0.47	1.42	1.42	1.65	1.65	1.85	1.97	2.05	2.28	2.28
	Gage length A [inch]	short	3.15 <sup>1)</sup>	3.15 <sup>1)</sup>	3.15	3.15	3.35	3.35	3.54	3.74	3.94	4.53	4.72
	Order No.	A63.140...	.1/8Z	.3/16Z	.1/4Z.4	.5/16Z.4	.3/8Z.4	.7/16Z.4	.1/2Z.4	.5/8Z.4	.3/4Z.4	.1Z.4	.1 1/4Z.4
	Gage length A [inch]	ZG130	-	-	5.12	5.12	5.12	5.12	5.12	5.12	5.12	5.12	5.12
	Order No.	A63.144...			.1/4Z.4	.5/16Z.4	.3/8Z.4	.7/16Z.4	.1/2Z.4	.5/8Z.4	.3/4Z.4	.1Z.4	.1 1/4Z.4
	Gage length A [inch]	oversize	-	-	6.30	6.30	6.30	6.30	6.30	6.30	6.30	6.30	-
	Order No.	A63.142...			.1/4Z.4	.5/16Z.4	.3/8Z.4	.7/16Z.4	.1/2Z.4	.5/8Z.4	.3/4Z.4	.1Z.4	

### Standard version with Safe-Lock™ and M3 seal screw installed

INCH	Clamping Ø D1 [inch]		1/4"	5/16"	3/8"	1/2"	5/8"	3/4"	1"	1 1/4"
	Ø D2 [inch]		0.83	0.83	0.94	0.94	1.06	1.30	1.73	1.73
	Ø D3 [inch]		1.06	1.06	1.26	1.26	1.34	1.65	2.09	2.09
	L [inch]		1.42	1.42	1.65	1.85	1.97	2.05	2.28	2.28
	Gage length A [inch]	short	3.15	3.15	3.35	3.54	3.74	3.94	4.53	4.72
	Order No.	A63.140...	.1/4Z.47	.5/16Z.47	.3/8Z.47	.1/2Z.47	.5/8Z.47	.3/4Z.47	.1Z.47	.1 1/4Z.47



### Accessories

Spare parts Coolant Tube

Order No. 85.700...



.63

Spare parts Set of Balance Screws



Spare parts Back up screws

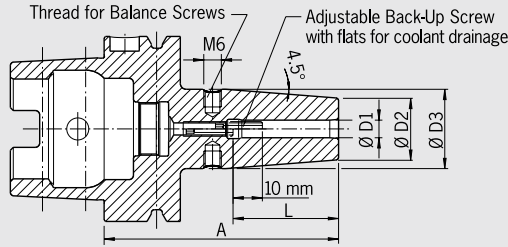


Cool Flash



Order No. 91.100.40

**SHRINK FIT CHUCK  
HSK-A 63 · DIN 69893-1  
METRIC**



**CERTIFICATE OF QUALITY**

- Chuck body fine balanced  
G2.5 25,000 rpm  
or U < 1 gmm
- All functional surfaces machined
- More accurate than DIN
- Cool-Jet, can be sealed
- T.I.R. < 0.00012" (3 µm)

**Use:**

Shrink fit chuck suitable for all shrink fit machines.

- Heat resistant hot-working steel
- Hardened 54-2 HRC
- For HSS and solid carbide tools
- Shank tolerance h6
- With threaded holes for balancing screws
- Included in delivery: Shrink fit chuck with backup screw, without coolant tube

**DIN 69893-1**

Optional:

- Cooling with Cool-Jet for an extra charge
- Cooling with Cool Flash for an extra charge

**Standard version, similar to DIN 69882-8**

METRIC	Clamping Ø D1 [mm]		03	04	05	06	08	10	12	14	16	18	20	25	32
	Ø D2 [mm]		10	10	10	21	21	24	24	27	27	33	33	44	44
	Ø D3 [mm]		—	—	—	27	27	32	32	34	34	42	42	53	53
	L [mm]		09	12	15	36	36	42	47	47	50	50	52	58	58
Gage length A [mm]	short		80 <sup>2)</sup>	80 <sup>2)</sup>	80 <sup>2)</sup>	80	80	85	90	90	95	95	100	115	120
Order No.	A63.140...		.03.1	.04.1	.05.1	.06	.08	.10	.12	.14	.16	.18	.20	.25	.32
Gage length A [mm]	ZG130		—	—	—	130	130	130	130	130	130	130	130	130	—
Order No.	A63.144...		—	—	—	.06	.08	.10	.12	.14	.16	.18	.20	.25	—
Gage length A [mm]	oversize		—	—	—	160	160	160	160	160	160	160	160	160	160
Order No.	A63.142...		—	—	—	.06	.08	.10	.12	.14	.16	.18	.20	.25	.32
Gage length A [mm]	ZG200		—	—	—	200	200	200	200	200	200	200	200	200	200
Order No.	A63.146...		—	—	—	.06	.08	.10	.12	.14	.16	.18	.20	.25	.32

**Standard version, with Cool-Jet (Ø 3–5 mm Cooling with slits)**

METRIC	Clamping Ø D1 [mm]		03	04	05	06	08	10	12	14	16	18	20	25	32
	Ø D2 [mm]		10	10	10	21	21	24	24	27	27	33	33	44	44
	Ø D3 [mm]		—	—	—	27	27	32	32	34	34	42	42	53	53
	L [mm]		09	12	15	36	36	42	47	47	50	50	52	58	58
Gage length A [mm]	short		80 <sup>1)</sup>	80 <sup>1)</sup>	80 <sup>1)</sup>	80	80	85	90	90	95	95	100	115	120
Order No.	A63.140...		.03	.04	.05	.06.2	.08.2	.10.2	.12.2	.14.2	.16.2	.18.2	.20.2	.25.2	.32.2
Gage length A [mm]	ZG130		—	—	—	130	130	130	130	130	130	130	130	130	—
Order No.	A63.144...		—	—	—	.06.2	.08.2	.10.2	.12.2	.14.2	.16.2	.18.2	.20.2	.25.2	—

**Standard version, with Safe-Lock™ pull out protection**

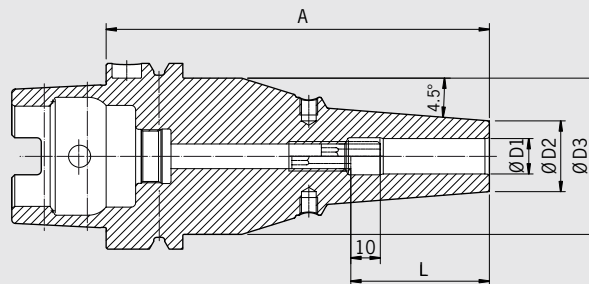
METRIC	Clamping Ø D1 [mm]		06	08	10	12	14	16	18	20	25	32
	Ø D2 [mm]		21	21	24	24	27	27	33	33	44	44
	Ø D3 [mm]		27	27	32	32	34	34	42	42	53	53
	L [mm]		36	36	42	47	47	50	50	52	58	58
Gage length A [mm]	short		80 <sup>3)</sup>	80 <sup>3)</sup>	85 <sup>3)</sup>	90 <sup>3)</sup>	90 <sup>3)</sup>	95 <sup>3)</sup>	95 <sup>3)</sup>	100 <sup>3)</sup>	115 <sup>3)</sup>	120 <sup>3)</sup>
Order No.	A63.140...		.06.7	.08.7	.10.7	.12.7	.14.7	.16.7	.18.7	.20.7	.25.7	.32.7

1) Without back-up screw, without threads for balancing screws, with slits along the clamping bore for cooling from outside  
 2) Without back-up screw, without threads for balancing screws  
 3) With tension spring



**CERTIFICATE OF QUALITY**

- ☑ Chuck body fine balanced  
 G2.5 25,000 rpm  
 or U < 1 gmm
- ☑ All functional surfaces machined
- ☑ More accurate than DIN
- ☑ Cool-Jet, can be sealed
- ☑ T.I.R. < 0.00012" (3 µm)



The Power Shrink Chuck is designed for the highest cutting performance in high-speed manufacturing. The optimized design combines high rigidity with vibration dampening, which protects the machine, spindle and tool.

- Higher cutting performance with higher spindle speeds, higher feed rates and larger cutting depths
- Shorter processing times
- Quieter running, therefore better surface finish quality and protection of tool, spindle and machine
- Higher machining accuracy
- With threaded holes for balancing screws
- Resealable Cool-Jet coolant bores included

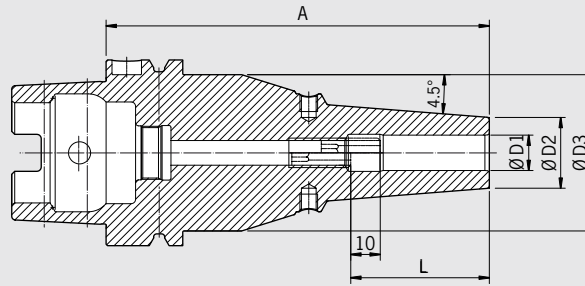
The ZG and oversize versions (A = 5.12" and 6.30") with slim tips are especially versatile to use.

- High rigidity
- Slim at the tip
- Dampen vibrations
- Higher clamping forces
- Equally suited to high-speed manufacturing and heavy milling
- Universal usage, saves space in tool magazine

Optional:

- Cooling with Cool Flash from diam. ¼" – 1" for an extra charge
- Safe-Lock™ Pull out protection

INCH	Clamping Ø D1 [inch]	1/4"	5/16"	3/8"	1/2"	5/8"	3/4"	1"	1 1/4"
	Ø D2 [inch] ultra short	0.87	0.87	1.04	1.04	1.16	1.40	1.77	1.77
	Ø D3 [inch] ultra short	—	—	—	—	—	—	2.01	2.01
	L [inch] ultra short	1.49	1.49	1.70	1.81	1.93	1.93	2.24	2.32
Gage length A [inch]	ultra short	2.76	2.76	2.76	2.76	2.95	2.95	3.35	3.35
Order No.	A63.145...	.1/4z.3	.5/16z.3	.3/8z.3	.1/2z.3	.5/8z.3	.3/4z.3	.1z.3	.1 1/4z.3
Safe-Lock™ Order No.	A63.145...	.1/4z.37	.5/16z.37	.3/8z.37	.1/2z.37	.5/8z.37	.3/4z.37	.1z.37	.1 1/4z.37
	Ø D2 [inch]	0.83	0.83	0.94	0.94	1.06	1.30	1.73	1.73
	Ø D3 [inch]	2.09	2.09	2.09	2.09	2.09	2.09	2.09	2.09
	L [inch]	1.42	1.42	1.65	1.85	1.97	2.05	2.28	2.28
Gage length A [inch]	ZG130	5.12	5.12	5.12	5.12	5.12	5.12	5.12	5.12
Order No.	A63.144...	.1/4z.3	.5/16z.3	.3/8z.3	.1/2z.3	.5/8z.3	.3/4z.3	.1z.3	.1 1/4z.3
Safe-Lock™ Order No.	A63.144...	.1/4z.37	.5/16z.37	.3/8z.37	.1/2z.37	.5/8z.37	.3/4z.37	.1z.37	.1 1/4z.37
Gage length A [inch]	oversize	6.30	6.30	6.30	6.30	6.30	6.30	6.30	6.30
Order No.	A63.142...	.1/4z.3	.5/16z.3	.3/8z.3	.1/2z.3	.5/8z.3	.3/4z.3	.1z.3	.1 1/4z.3
Safe-Lock™ Order No.	A63.142...	.1/4z.37	.5/16z.37	.3/8z.37	.1/2z.37	.5/8z.37	.3/4z.37	.1z.37	.1 1/4z.37



**CERTIFICATE OF QUALITY**

- Chuck body fine balanced  
G2.5 25,000 rpm  
or U<1 gmm
- All functional surfaces machined
- More accurate than DIN
- Cool-Jet, can be sealed
- T.I.R. < 0.00012" (3 µm)

**The Power Shrink Chuck is designed for the highest cutting performance in high-speed manufacturing. The optimized design combines high rigidity with vibration dampening, which protects the machine, spindle and tool.**

- Higher cutting performance with higher spindle speeds, higher feed rates and larger cutting depths
- Shorter processing times
- Quieter running, therefore better surface finish quality and protection of tool, spindle and machine
- Higher machining accuracy
- With threaded holes for balancing screws
- Resealable Cool-Jet coolant bores included

**The ZG and oversize versions (A = 120, 130 and 160 mm) with slim tips are especially versatile to use.**

- High rigidity
- Slim at the tip
- Dampen vibrations
- Higher clamping forces
- Equally suited to high-speed manufacturing and heavy milling
- Universal usage, saves space in tool magazine

Optional:

- Cooling with Cool Flash for an extra charge
- Safe-Lock™ Pull out protection

METRIC	Clamping Ø D1 [mm]	06	08	10	12	14	16	18	20	25	32
	Ø D2 [mm] ultra short	22	22	26.5	26.5	29.5	29.5	35.5	35.5	45	45
	Ø D3 [mm] ultra short	—	—	—	—	—	—	—	—	51	51
	L [mm] ultra short	38	38	43	46	48	49	49	49	57	59
Gage length A [mm]	ultra short	70 <sup>1)</sup>	70 <sup>1)</sup>	70 <sup>1)</sup>	70 <sup>1)</sup>	75 <sup>1)</sup>	75 <sup>1)</sup>	75 <sup>1)</sup>	75 <sup>1)</sup>	85 <sup>1)</sup>	85 <sup>1)</sup>
Order No.	A63.145...	.06.3	.08.3	.10.3	.12.3	.14.3	.16.3	.18.3	.20.3	.25.3	.32.3
Safe-Lock™ Order No.	A63.145...	.06.37	.08.37	.10.37	.12.37	.14.37	.16.37	.18.37	.20.37	.25.37	.32.37
	Ø D2 [mm]	21	21	24	24	27	27	33	33	44	44
	Ø D3 [mm]	53	53	53	53	53	53	53	53	53	53
	L [mm]	36	36	42	47	47	50	50	52	58	58
Gage length A [mm]	ZG120	120	120	120	120	120	120	120	120	120	120
Order No.	A63.147...	.06.3	.08.3	.10.3	.12.3	.14.3	.16.3	.18.3	.20.3	.25.3	.32.3
Safe-Lock™ Order No.	A63.147...	.06.37	.08.37	.10.37	.12.37	.14.37	.16.37	.18.37	.20.37	.25.37	.32.37
Gage length A [mm]	ZG130	130	130	130	130	130	130	130	130	130	130
Order No.	A63.144...	.06.3	.08.3	.10.3	.12.3	.14.3	.16.3	.18.3	.20.3	.25.3	.32.3
Safe-Lock™ Order No.	A63.144...	.06.37	.08.37	.10.37	.12.37	.14.37	.16.37	.18.37	.20.37	.25.37	.32.37
Gage length A [mm]	oversize	160	160	160	160	160	160	160	160	160	160
Order No.	A63.142...	.06.3	.08.3	.10.3	.12.3	.14.3	.16.3	.18.3	.20.3	.25.3	.32.3
Safe-Lock™ Order No.	A63.142...	.06.37	.08.37	.10.37	.12.37	.14.37	.16.37	.18.37	.20.37	.25.37	.32.37

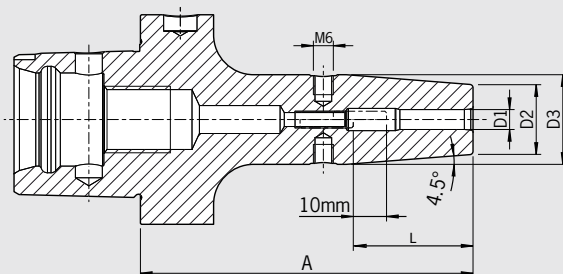


1) Without back-up screw

# SHRINK FIT CHUCK HAIMER CAPTO™ C6 · ISO 26623-1

### CERTIFICATE OF QUALITY

- ☑ Chuck body fine balanced  
G2.5 25,000 rpm  
or U < 1 gmm
- ☑ All functional surfaces machined
- ☑ More accurate than DIN
- ☑ T.I.R. < 0.00012" (3 µm)



### Use:

Shrink fit chuck suitable for all shrink fit machines.

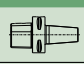
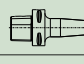
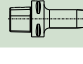
- Available from Ø 3 to Ø 32
- Interface with a unique tapered polygon and flange location face
- Exact positioning in the spindle
- Highest runout accuracy, torque and rigidity
- Innovative modular tool system with highest precision
- Suitable for both turning and milling centers
- With threaded holes for balancing screws
- Inch sizes with Cool-Jet, metric sizes with Cool-Jet optional

### ISO 26623

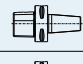
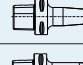
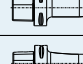

- Delivery: With back-up screw

### Optional:

- Metric sizes: Cooling with Cool-Jet for an extra charge
- Cooling with Cool Flash from diam. ¼" - 1" for an extra charge

INCH	Clamping Ø D1 [mm]		1/4"	5/16"	3/8"	7/16"	1/2"	5/8"	3/4"	7/8"	1"	1 1/4"
	Ø D2 [mm]		0.83	0.83	0.94	0.94	0.94	1.06	1.30	1.30	1.73	1.73
	Ø D3 [mm]		1.06	1.06	1.26	1.26	1.26	1.34	1.65	1.65	2.09	2.09
	L [mm]		1.42	1.42	1.65	1.65	1.85	1.97	2.05	2.05	2.28	2.28
Gage length A [inch]	short		3.15	-	3.15	-	3.15	3.35	3.35	-	3.54	-
Order No.	CC6.140...		.1/4Z.4	-	.3/8Z.4	-	.1/2Z.4	.5/8Z.4	.3/4Z.4	-	.1Z.4	-
Gage length A [inch]	long		3.94	3.94	3.94	3.94	3.94	3.94	3.94	3.94	-	-
Order No.	CC6.141...		.1/4Z.4	.5/16Z.4	.3/8Z.4	.7/16Z.4	.1/2Z.4	.5/8Z.4	.3/4Z.4	.7/8Z.4	-	-
Gage length A [inch]	ZG130		5.12	-	5.12	-	5.12	5.12	5.12	-	5.12	5.12
Order No.	CC6.144...		.1/4Z.4	-	.3/8Z.4	-	.1/2Z.4	.5/8Z.4	.3/4Z.4	-	.1Z.4	.11/4Z.4



METRIC	Clamping Ø D1 [mm]		03	04	05	06	08	10	12	14	16	18	20	25	32
	Ø D2 [mm]		10	10	10	21	21	24	24	27	27	33	33	44	44
	Ø D3 [mm]		-	-	-	27	27	32	32	34	34	42	42	53	53
	L [mm]		09	12	15	36	36	42	47	47	50	50	52	58	58
Gage length A [mm]	short		80 <sup>1)</sup>	80 <sup>1)</sup>	80 <sup>1)</sup>	80	80	80	80	85	85	85	85	90	95
Order No.	CC6.140...		.03	.04	.05	.06	.08	.10	.12	.14	.16	.18	.20	.25	.32
Gage length A [mm]	long		-	-	-	100	100	100	100	100	100	100	100	-	-
Order No.	CC6.141...		-	-	-	.06	.08	.10	.12	.14	.16	.18	.20	-	-
Gage length A [mm]	ZG130		-	-	-	130	130	130	130	130	130	130	130	130	130
Order No.	CC6.144...		-	-	-	.06	.08	.10	.12	.14	.16	.18	.20	.25	.32
Gage length A [mm]	oversize		-	-	-	160	160	160	160	160	160	160	160	160	160
Order No.	CC6.142...		-	-	-	.06	.08	.10	.12	.14	.16	.18	.20	.25	.32

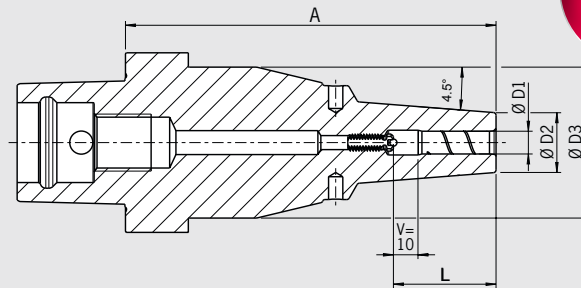
### Accessories

#### Cool Flash



Order No. 91.100.40

1) Without back-up screw, without threads for balancing screws, with slits along the clamping bore for cooling from outside



CERTIFICATE OF QUALITY	
<input checked="" type="checkbox"/>	Chuck body fine balanced G2.5 25,000 rpm or U < 1 gmm
<input checked="" type="checkbox"/>	All functional surfaces machined
<input checked="" type="checkbox"/>	More accurate than DIN
<input checked="" type="checkbox"/>	T.I.R. < 0.00012" (3 µm)

**The Power Shrink Chuck is designed for the highest cutting performance in high-speed manufacturing. The optimized design combines high rigidity with vibration dampening, which protects the machine, spindle and tool.**

- Higher cutting performance with higher spindle speeds, higher feeds and larger cutting depths
- Shorter processing times, higher machining accuracy
- Quieter running, therefore better surface finish quality and protection of tools, spindles and machines
- With threaded holes for balancing screws
- Cool-Jet bores that can be sealed included
- Cooling with Cool Flash from diam. 1/4" – 1" for an extra charge

**The long versions (A=130) with slim tips are especially versatile to use.**

- High rigidity, slim at the tip, dampen vibrations
- High clamping force
- Equally suited to high-speed manufacturing and heavy milling
- Universal usage, saves space in tool magazine

INCH	Clamping Ø D1 [inch]	1/4"	5/16"	3/8"	7/16"	1/2"	5/8"	3/4"	7/8"	1"	1 1/4"
	Ø D2 [inch] ultra short	0.87	0.87	1.04	1.04	1.04	1.16	1.40	1.40	1.77	1.77
	Ø D3 [inch] ultra short	—	—	—	—	—	—	—	—	—	—
	L [inch] ultra short	1.50	1.50	1.69	1.81	1.81	2.00	2.09	2.09	2.36	2.56
Gage length A [inch]	ultra short	2.56	2.56	2.56	2.56	2.76	2.95	2.95	2.95	3.15 <sup>1)</sup>	3.15 <sup>1)</sup>
Order No.	CC6.145...	.1/4Z.3	.5/16Z.3	.3/8Z.3	.7/16Z.3	.1/2Z.3	.5/8Z.3	.3/4Z.3	.7/8Z.3	.1Z.3	.11/4Z.3
Safe-Lock™ Order No.	CC6.145...	—	—	—	—	.1/2Z.37	.5/8Z.37	.3/4Z.37	—	—	—
	Ø D2 [inch] ZG130	0.83	—	0.94	—	0.94	1.06	1.30	—	—	—
	Ø D3 [inch] ZG130	2.09	—	2.09	—	2.09	2.09	2.09	—	—	—
	L [inch] ZG130	1.42	—	1.65	—	1.65	1.97	1.97	—	—	—
Gage length A [inch]	ZG130	5.12	—	5.12	—	5.12	5.12	5.12	—	—	—
Order No.	CC6.144...	.1/4Z.3	—	.3/8Z.3	—	—	—	—	—	—	—
Safe-Lock™ Order No.	CC6.144...	.1/4Z.37	—	.3/8Z.37	—	.1/2Z.37	.5/8Z.37	.3/4Z.37	—	—	—

METRIC	Clamping Ø D1 [mm]	06	08	10	12	14	16	18	20	25	32
	Ø D2 [mm] ultra short	22	22	26.5	26.5	29.5	29.5	35.5	35.5	45	45
	Ø D3 [mm] ultra short	—	—	—	—	—	—	—	—	—	—
	L [mm] ultra short	38	38	43	46	48	51	51	53	60	65
Gage Length A [mm]	ultra short	65 <sup>2)</sup>	65 <sup>2)</sup>	65 <sup>2)</sup>	65 <sup>2)</sup>	70 <sup>2)</sup>	70 <sup>2)</sup>	70 <sup>2)</sup>	70 <sup>2)</sup>	80 <sup>2)</sup>	80 <sup>2)</sup>
Order No.	CC6.145...	.06.3	.08.3	.10.3	.12.3	.14.3	.16.3	.18.3	.20.3	.25.3	.32.3
Safe-Lock™ Order No.	CC6.145...	—	—	—	.12.37	—	.16.37	—	.20.37	—	—
	Ø D2 [mm] ZG130	21	21	24	24	—	27	—	33	—	—
	Ø D3 [mm] ZG130	53	53	53	53	—	53	—	53	—	—
	L [mm] ZG130	36	36	42	47	—	50	—	52	—	—
Gage Length A [mm]	ZG130	130	130	130	130	—	130	—	130	—	—
Order No.	CC6.144...	.06.3	.08.3	.10.3	.12.3	—	.16.3	—	.20.3	—	—
Safe-Lock™ Order No.	CC6.144...	—	—	.10.37	.12.37	—	.16.37	—	.20.37	—	—

**Accessories**

**Cool Flash**



Order No. 91.100.40

1) With back-up screw  
2) Without back-up screw

HAIMER has the right shrink fit technology for any need with the largest range of shrink fit equipment and coils in the world.



### Power Clamp Mini: HAIMER Quality in a small package

An economical introduction to shrink fit technology

#### Features:

- Simple and functional single chuck shrink solution
- Tool changes in less than 5 seconds
- Shrinks solid carbide and HSS tools
- Ideal for price-conscious user who only shrinks a few tools daily



### Power Clamp Economic Plus: All you need at a great price

High performance shrink fit machine for all tools

#### Features:

- High performance coil
- Contact cooling stations guarantee increased productivity
- One-handed operations – all at the touch of a button
- Possibility to upgrade:  
As a part of our modular Profi Shrink Fit Line, this machine may be upgraded as the demands and requirements of your business change.



### Power Clamp Comfort NG: One step up in productivity

Full performance with unbeatable efficiency

#### Features:

- All of the high performance features you know, with added capabilities to increase your output
- Rotary table chuck support allows for simultaneous shrinking and cooling in record time
- New Generation Coil adjusts to the size of the shrink fit chucks with one turn, even further simplifying the shrink process

See the HAIMER Power Clamp Shrink Fit System in Action:



**HAIMER**<sup>®</sup>  
Quality Wins.



Tooling Technology



Shrinking Technology



Balancing Technology



Measuring Instruments



Tool Management

Haimer USA, LLC | 134 E. Hill Street | Villa Park, IL 60181 | USA

Phone (630)833-1500 | Fax (630)833-1507 | Mail: [haimer@haimer-usa.com](mailto:haimer@haimer-usa.com) | [www.haimer-usa.com](http://www.haimer-usa.com)

Haimer Mexico | Anillo Vial Fray Junipero Serra No. 16950 Bodega 2 | Micro Parque Industrial Sotavento

Querétaro., QRO. C.P 76127 | Mexico | Phone +442-243-0950 | [www.haimer-mexico.com](http://www.haimer-mexico.com) | [haimer@haimermx.com](mailto:haimer@haimermx.com)